

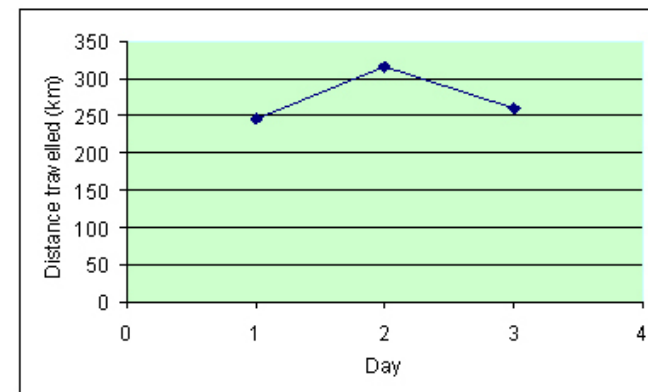
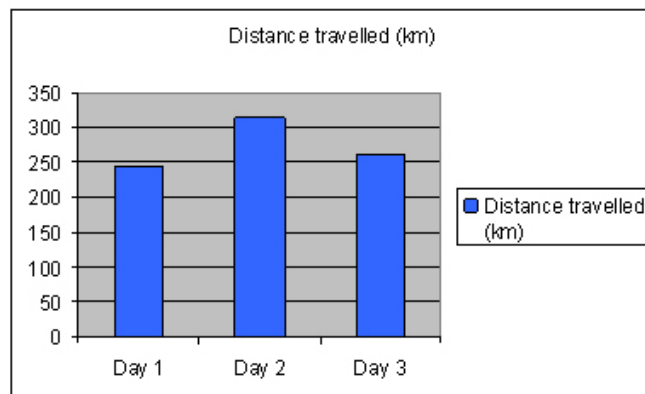
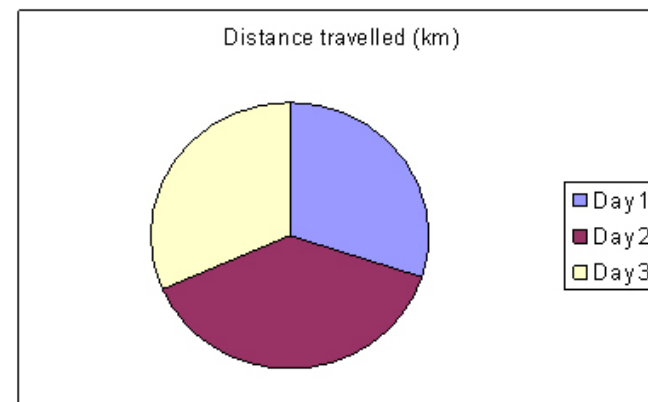


## ACTIVITY 3 - STARTER



Which of these graphs is most useful?

Day	Distance travelled (km)
1	245
2	315
3	260

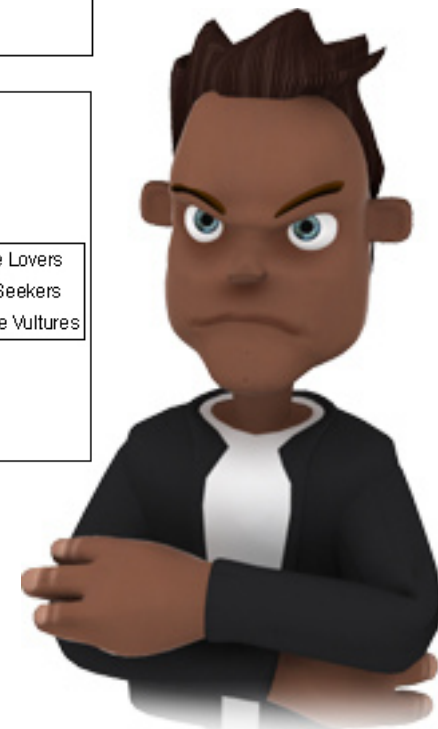
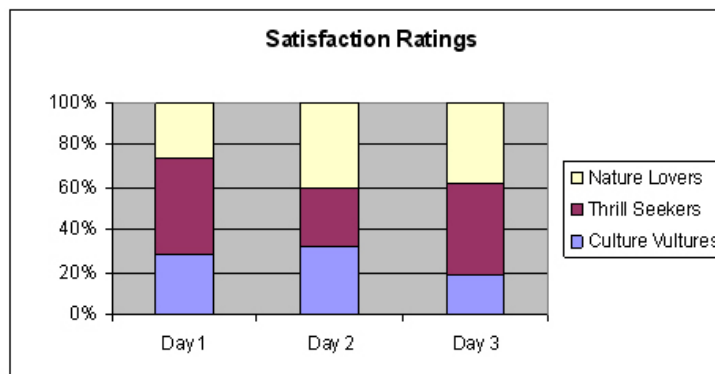
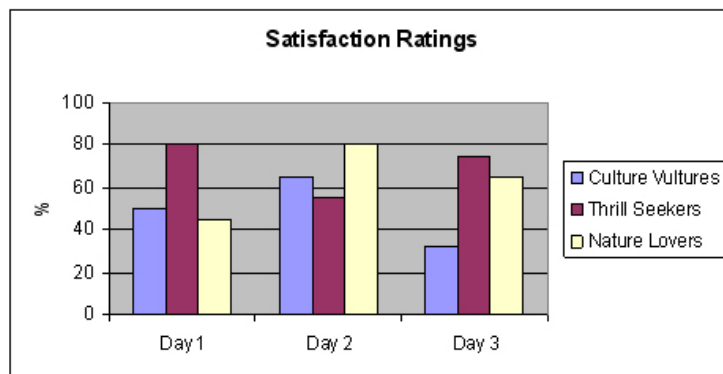
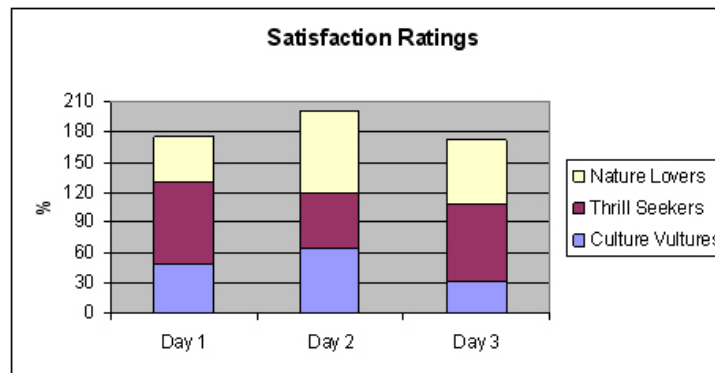




# ACTIVITY 3 - STARTER

Which of these graphs best represents the data in the table?

Sub-group	Day 1	Day 2	Day 3
Culture Vultures	50	65	32.5
Thrill Seekers	80	55	75
Nature Lovers	45	80	65





# ACTIVITY 3 - TOUR DIARY



Your overall aim is to plan and lead a UK tour that will:

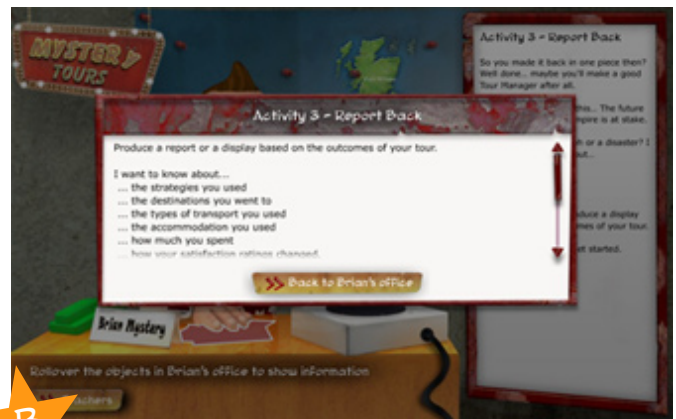
- keep your tour party satisfied
- make a substantial profit.

Last time, you tracked the progress of your tour and responded to the problems that arose.

In this third activity, you will report back to Brian on the outcomes of your tour.

## Getting Started

Click on the document on Brian's desk to start your report (see screen shot A below).  
Use the guidance that appears to help you (see screen shot B below).



Within your group, make a list of what to include in your report:

- Which data do you want to present?
- How are you going to present it?
- Who is going to do what?

Write your comments in this space.



## ACTIVITY 3 - TOUR DIARY

### Producing Your Report

Use the time given to you to produce your tour report.

Refer back to the company rules, your original tour plan and the results you recorded.

Illustrate your comments by presenting the data you've collected.

Use a variety of different presentation techniques, e.g. maps, graphs, tables, etc.

### Finishing Off

Now, within your group, discuss your work on Mystery Tours.

- How satisfied are you with your overall performance?
- Which activity or activities did you find easy?
- Which activity or activities did you find difficult?
- Did your group meet the required aims?
- How would you do things differently next time?

**Write your comments in this space.**